

Operating instructions

Maintenance instructions

Spare part list



EFA Suction Unit

Type VS400



Important Information:

Please forward these operating instructions to your
operating personnel!

Table of contents

1. Use, scope of delivery, accessories	5
1.1 Symbols in these instructions.....	5
1.2 Intended use.....	5
1.2.1 Application area	5
1.2.2 Residual hazards	5
2. Safety instructions	5
2.1 General safety instructions	5
2.2 Behavior of the workspace	6
3. Functional description and operation	6
Pressing the green button ("I") on the switch (10) will turn on the process. The air blower (9) will generate suction in the main tank (1) and the suction lines connected directly to it. As a result, the desired content will flow into the main tank.....	7
When the filling level will reach its maximum, the separator (2) will fill up, causing the ball inside to close the suction point. The emergency valve will open and the main tank will start draining. That prevents damaging the air blower by the content.....	7
In normal conditions, draining the main tank starts upon pressing the red button ("O") on the switch. The weight of the content will cause the lower lid to open. Be sure to have the container under before doing so. Draining from the separator (2) starts at the same time as main tank. It is recommended to clean it inside before next use.	7
3.2 Operation	7
3.2.1 Daily controls	7
3.2.2 Switch on	7
3.2.3 Switch off	7
3.2.4 Draining	7
4. Assembly	7
4.1 Transport.....	7
4.2 Before installing the Suction Unit System EFA VS 400	8
4.3 Set up	8
5. Cleaning and maintenance.....	8
5.1 Main tank	8
5.2 Separator.....	9
5.7 Troubleshooting	10
6. Take back of old equipment.....	10
A. Appendix.....	11
A.1 Technical Data	11
A.2 Spare part list	12
A.3 Electrical schematic	18

1. Use, scope of delivery, accessories

Notes, be sure to read!

These instructions are intended for the machine operator.

Keep the operating instructions with the vacuum unit. It must be available at all times.

The vacuum unit may only be operated:

- in technically perfect condition, in accordance with the regulations, as well as safety- and hazard-conscious.
- with all safety devices attached.
- according to the safety instructions.
- after the operating personnel have read these instructions, in particular chapter 2 "Safety instructions" (p.2) and chapter 3 "Functional description and operation" (p. 3) have been read and understood.

This is the only way to avoid operating errors and to assess driving situations correctly.

1.1 Symbols in these instructions

Hazard symbol:



Extreme caution and care are required here. In case of incorrect behavior, there is a direct risk of injury to the operating personnel or third parties. In addition, the machine may be damaged.

Information symbol:



Text passages marked with this symbol provide you with important information and useful tips.

1.2 Intended use

1.2.1 Application area

The vacuum unit is built according to state-of-the-art technology and recognized safety rules.

The vacuum unit is used exclusively for the removal of animal excrement by vacuum. Any

other use or use beyond this is considered improper. The manufacturer is not liable.

The manufacturer is not liable for any damage resulting from this. The risk is borne solely by the user. Intended use also includes observing the operating instructions and complying with the inspection and maintenance conditions.

For all other applications, the risk of accidents or increased wear must be pointed out. The user alone is liable in the event of non-compliance.

1.2.2 Residual hazards

However, the use of the equipment may result in danger to life and limb of the user or third parties, or damage to the equipment or other property if the user:

- is not used as intended
- is improperly modified or converted
- the safety instructions are not observed

2. Safety instructions

When using the vacuum aggregate, be sure to observe the following safety measures.

2.1 General safety instructions

- It is assumed that the operating personnel have sufficient knowledge to work with the vacuum unit.
- Make sure that the machine is always kept in a safe operating condition and immediately replace defective parts that could impair operating safety.
- Installation, maintenance and repair work may only be carried out by authorized and qualified personnel.
- Only use original EFA accessories. The use of other tools or accessories can be dangerous for you. Failure to use original spare parts will void the warranty.
- Technical modifications or conversions to the equipment are generally not permitted and release S&W from any warranty and liability.
- The system may only be operated if all protective and safety devices are

present and functioning properly.

- The limit values for pressures and temperatures must be permanently marked and must not be exceeded or fallen short of.
- The warning and safety notices on the equipment must be observed and kept in a legible condition at all times.

2.2 Behavior of the workspace

- Keep your workplace tidy. Disorder can result in accidents.
- Take environmental influences into account. Ensure good lighting (min. 500 lux).
- Always switch off the device when not in use.
- Work clothing: Do not wear loose clothing or jewelry - these can be caught by moving parts. Wear sturdy shoes when working. Generally wear a hair net!
- Wear the prescribed personal hearing protection during operation of the system, depending on the noise level.
- Avoid abnormal body posture. Ensure secure footing and maintain balance at all times.
- When working above body height, use suitable, safety-compliant access aids and working platforms. Do not use any machine parts as climbing aids.
- Care for your tools with care.
- Do not leave any tool keys inserted. Before switching on, check that all keys have been removed.

3. Functional description and operation

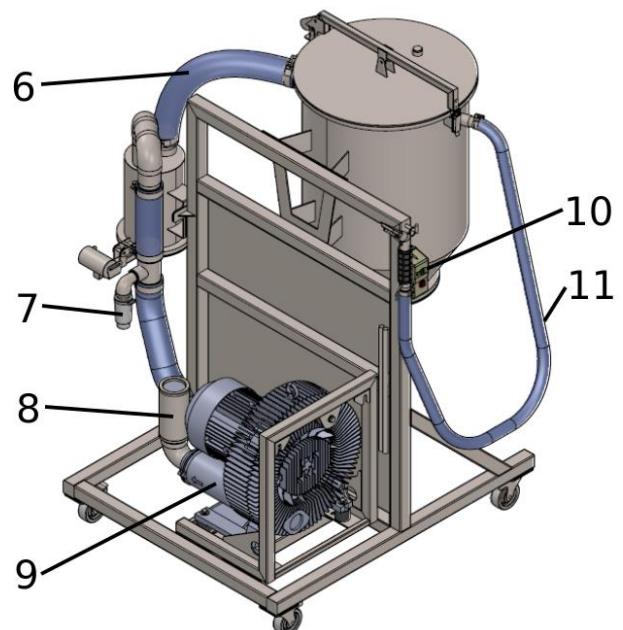
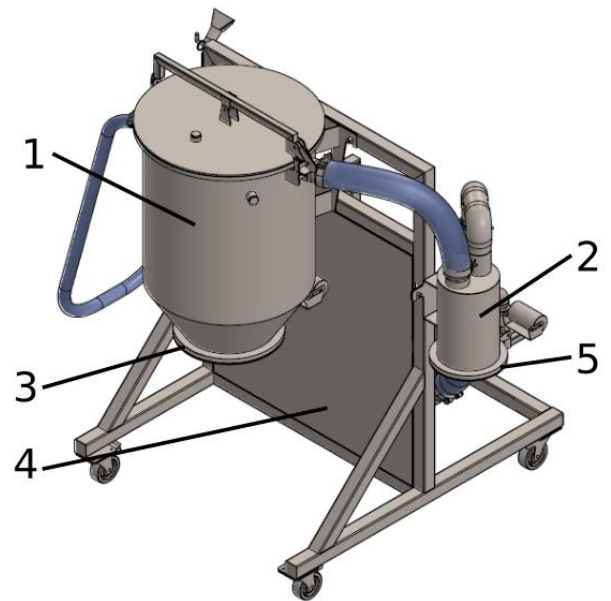


Only use the vacuum unit for the extraction of animal excrement.

3.1

Functional

description



1 – Main tank; 11 – Suction handle (optional)

2 – Separator

3 – Tank release point

4 – Base

5 – Separator release point

6 – Hoses

7 – Emergency valve

8 – Noise silencer

9 – Air blower

10 – On/Off switch

Pressing the green button ("I") on the switch (10) will turn on the process. The air blower (9) will generate suction in the main tank (1) and the suction lines connected directly to it. As a result, the desired content will flow into the main tank.

When the filling level will reach its maximum, the separator (2) will fill up, causing the ball inside to close the suction point. The emergency valve will open and the main tank will start draining. That prevents damaging the air blower by the content.

In normal conditions, draining the main tank starts upon pressing the red button ("O") on the switch. The weight of the content will cause the lower lid to open. Be sure to have the container under before doing so. Draining from the separator (2) starts at the same time as main tank. It is recommended to clean it inside before next use.

3.2 Operation



Only use the vacuum unit for the extraction of animal excrement.



All cleaning agents for stainless steel equipment are suitable for cleaning the receptacle.

3.2.1 Daily controls

- Check hoses:
 - between main tank and separator
 - between separator and air blower**(important!)**

If there's any unwanted substances, clean it immediately.

3.2.2 Switch on

Set the switch (10) to 1.

3.2.3 Switch off

Set the main switch (10) to 0.

3.2.4 Draining

Empty the main tank (1) when the maximum filling level is reached and before each longer downtime.

Draining the main tank:

- Put a container under main tank (optional)
- Set the main switch (10) to 0.

Draining the separator:

- Set the main switch (10) to 0.
- Separator will drain itself when full by the weight of content.
- If needed, clean it inside before next use to prevent sucking remains into air blower

4. Assembly

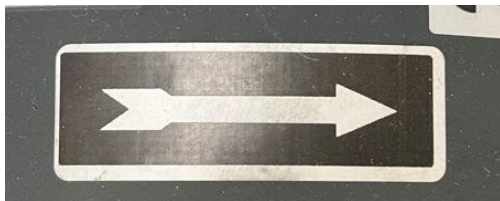
4.1 Transport



It is strictly forbidden to stand underneath a lifted load! Falling loads can cause extremely serious injuries.

- Only transport the suction unit with locked wheels.
- Only use suitable means of transport and lifting gear with sufficient load-bearing capacity.
- Only use load-bearing and stable loading ramps.
- Secure the suction unit against sliding and tipping.

4.2 Before installing the Suction Unit System EFA VS 400



Before use the Suction Unit, start the air blower and check the rotation of the motor. The right direction is shown on the rotor's housing (see arrow).

If the direction of rotation is different than indicated by arrow, stop the system immediately and change the direction by switching phases (e.g. PH1 with PH2) in the electric plug.

NOTICE!

This operation should be done only by a qualified electrician.

After making sure, that all connections and the direction of the rotation of the air blower are correct, turn the main switch on. The Suction Unit System is ready to operate.

4.3 Set up



The main connections must comply with the regulations of the local power supply company and be protected by a residual current circuit breaker (residual current <0.03 A) and fuses (16 A, slow-blow).

Do not lay the unit on its side.

The suction connection is designed as a spigot with a 1-1/4" female thread.

Carry out the set-up and installation as follows:

- Set up the vacuum unit on a level, load-bearing floor.
- Lock all the wheels.
- Have a qualified person make the electrical connection.

5. Cleaning and maintenance



Disconnect the suction unit from the power supply before servicing it.

5.1 Main tank

Proceed as follows:

- Set the main switch (10) to 0.
- All the content inside will be drained out. Remember to put a container below it.
- Unlock the top lid and lift it up as far as it goes. The trigger will lock it in this position preventing self-closing.
- After cleaning, lift the top lid's trigger and gently close it.



All cleaning agents for stainless steel equipment are suitable for cleaning the main tank.

5.2 Separator

Proceed as follows:

- If full, it'll empty automatically.
- Lift the bottom lid and clean the separator inside.



**IT IS RECOMMENDED TO CLEAN
HOSES ON WEEKLY/MONTHLY
BASIS TO PREVENT SYSTEM
MALFUNCTIONS**



5.7 Troubleshooting

Malfunction	Possible reason	Remediation
Suction unit does not run	Power supply interrupted.	Check the main connections and phases. Notify the customer service if none of the above errors are present.
	Motor protection tripped due to overload of air blower (10).	Open the switch box (10) and check whether the motor protection switch has tripped.
Air blower is running, but no flow at all	Main tank is full. Separator is full and ball blocked suction point.	Empty the main tank and separator.
Low flow rate	Separator is full and ball blocked suction point.	Empty the separator.

6. Take back of old equipment

Return old equipment to the parent company for disposal.

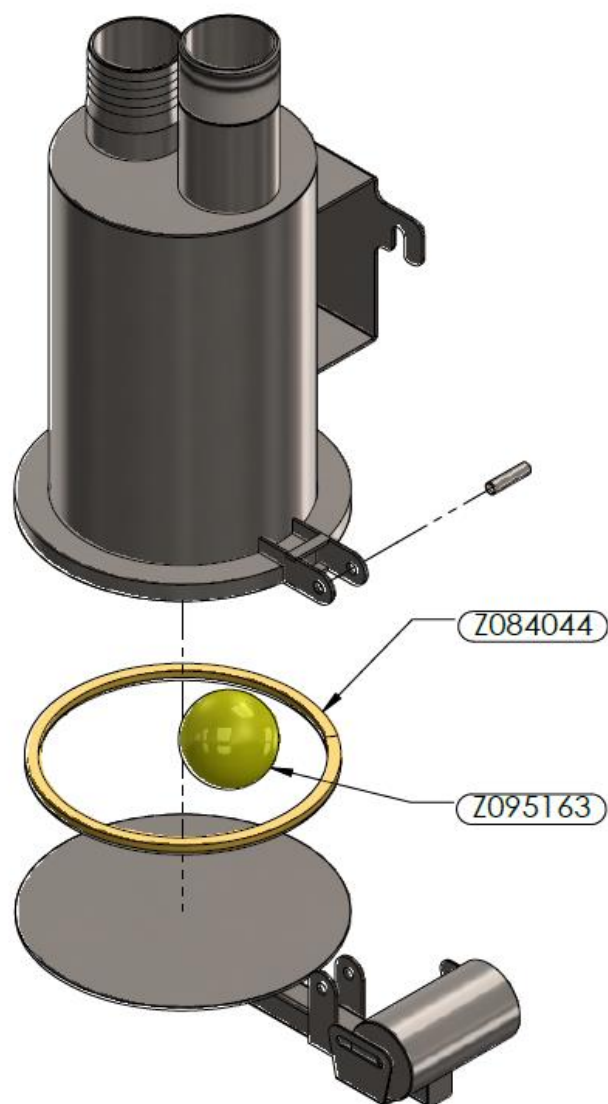
A. Appendix

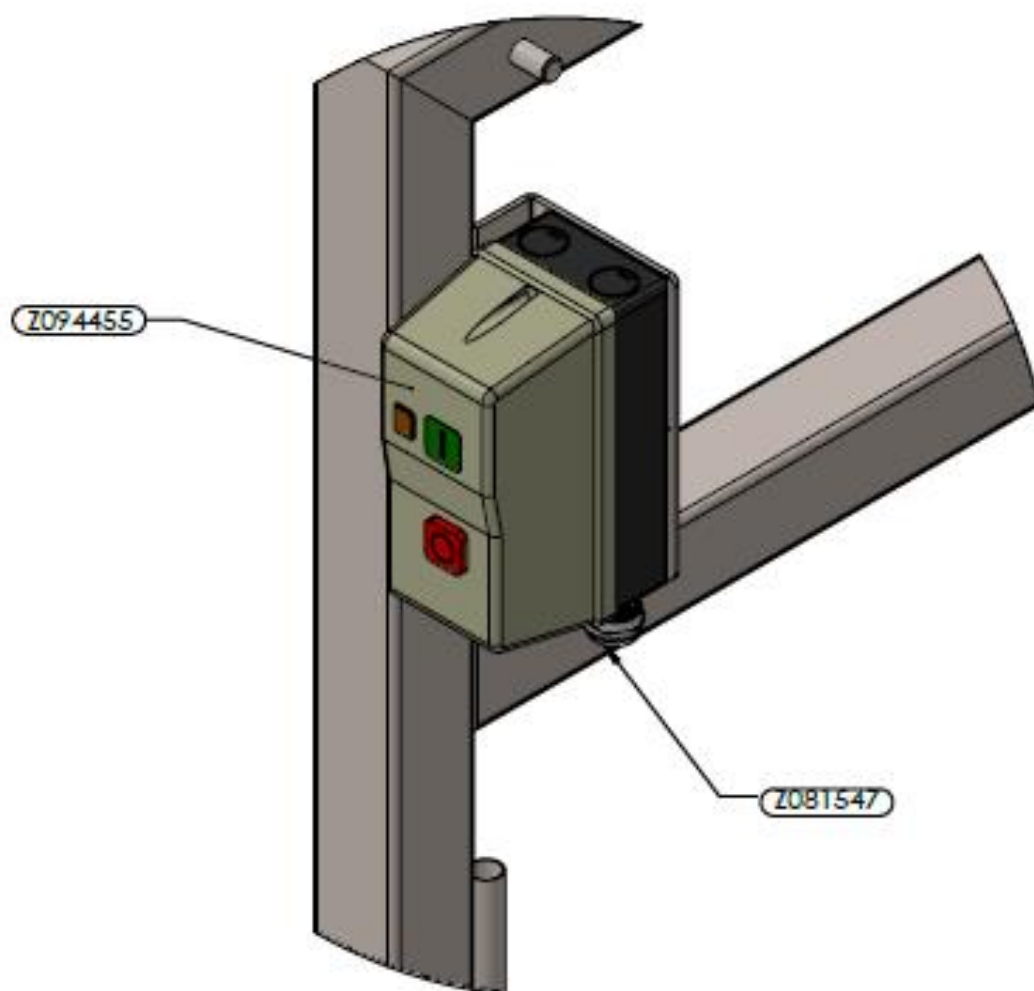
A.1 Technical Data

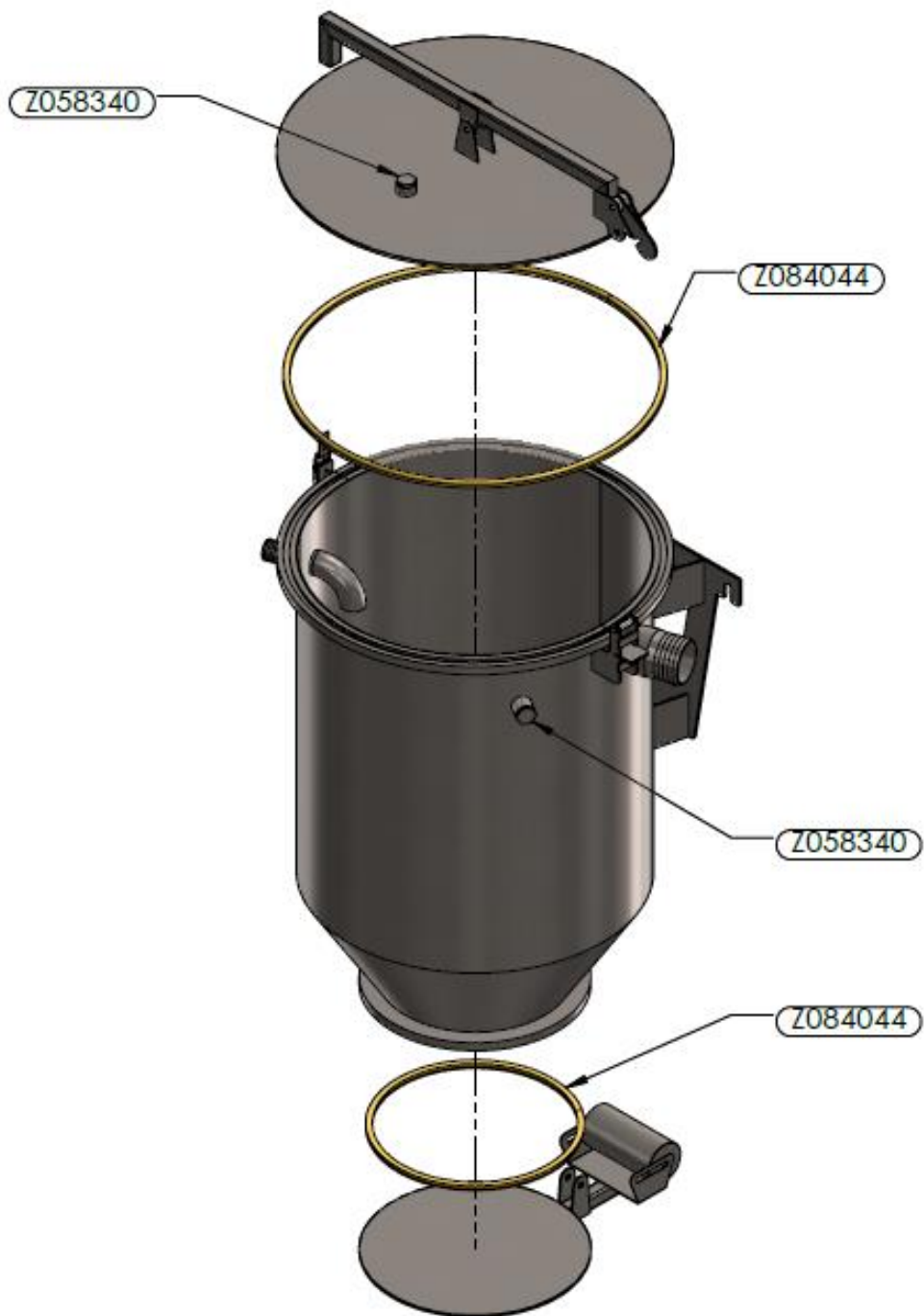
Description	Value
Voltage	3 x 400 V / 50 Hz / N / PE
Current	14A
Rated power	5,5kW
Flow rate	530 m ³ /h
Contents of the receptacle	100 L
Mass (net)	280 kg
Ambient temperature	From +5°C to +35°C

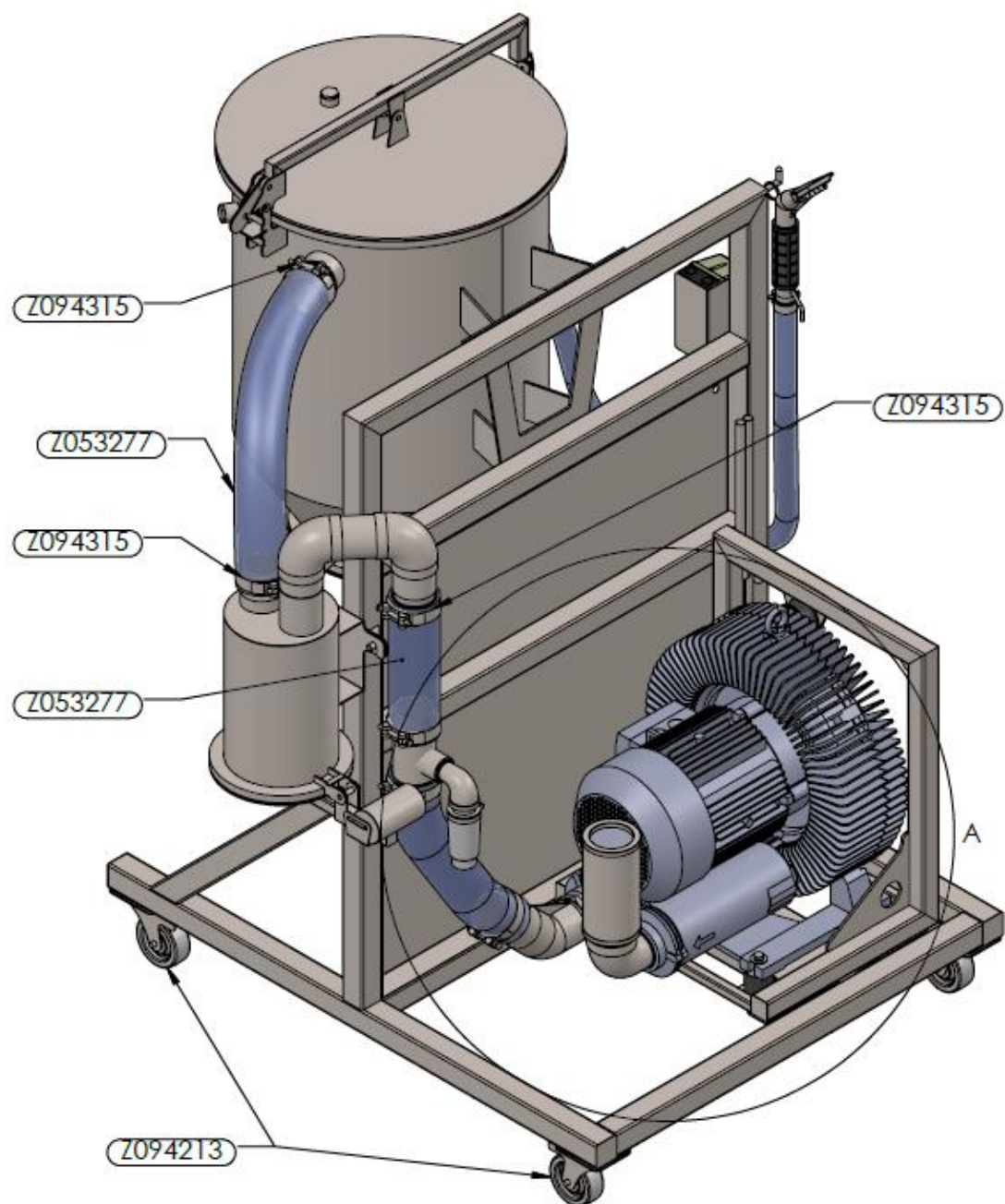
A.2 Spare part list

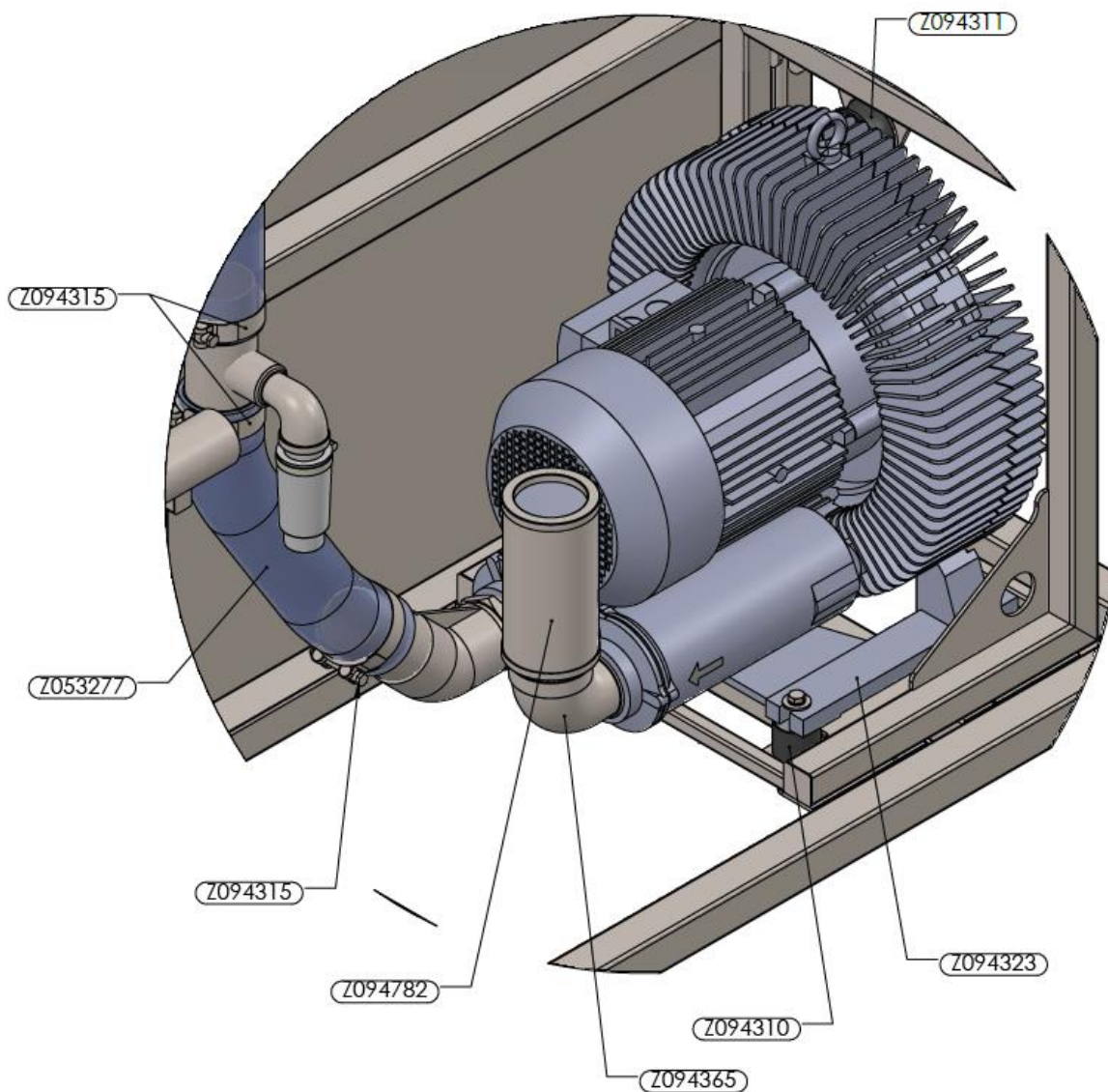
Part number	Part Name
Z053277	Hose
Z058340	Hexagon head male plug
Z081547	Cable gland
Z084044	Silicon profile gasket
Z094213	Wheel
Z094310	Vibro-isolator A
Z094311	Vibro-isolator B
Z094315	Adjustable hose clamp
Z094323	Air blower
Z094365	Male-female elbow 1-1/2
Z094455	ON/OFF Switch
Z094782	Silencer
Z095163	Ball



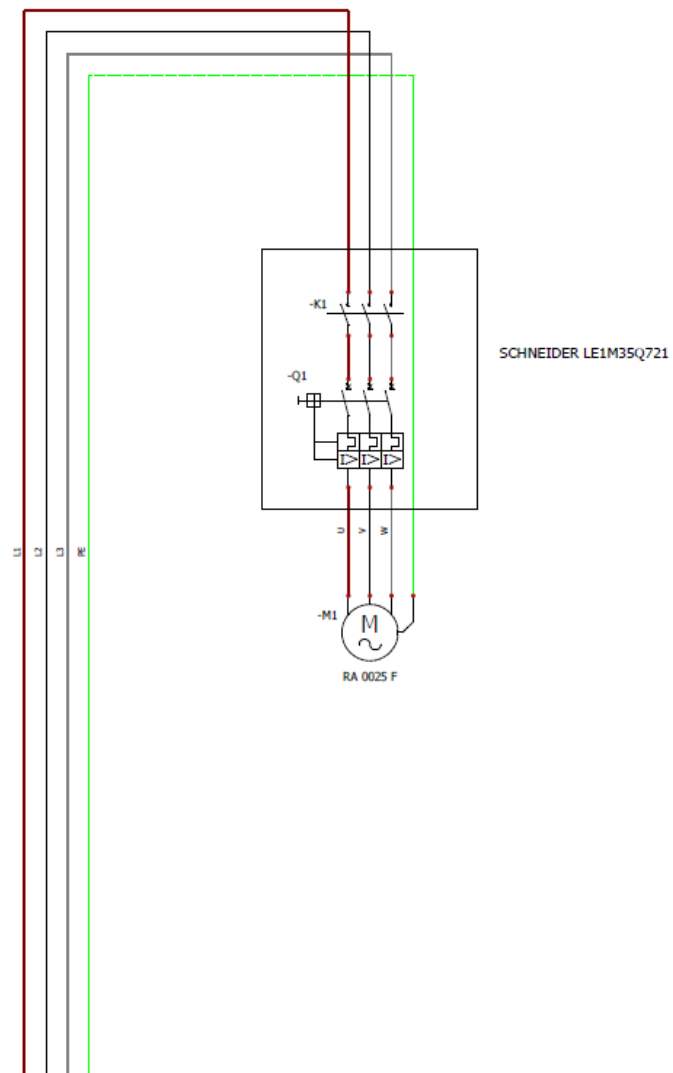








A.3 Electrical schematic



Chorzów, 19.01.2021

DECLARATION OF CONFORMITY

2006/42/EC MACHINERY



Manufacturer: Weindich Sp. J., ul. Adamieckiego 8, 41-503 Chorzów

Declare that the product described below is in conformity with the relevant provisions of the following directives and the National Laws and Regulations adopting these directives.

Machinery Directive: 2006/42/EC
Low Voltage Directive: 2014/35/EC
EMC Directive: 2014/30/EU

Product type: Suction Unit System

Model: VS400

Serial Number: _____

The product has been tested and assessed by application of the following standards or specifications. Together with all relevant National Technical Standards and Specifications as applicable.

Applied standards:

- DIN EN ISO 12100:2012
- DIN EN ISO 13850:2016-03
- EN 60204-1:2018-12
- EN 60529:2003
- EN 1672-2+A1:2009
- EN 55014-1:2017-06/A11:2020-07
- EN 55014-2:2015-06
- DIN EN 61000-6-3:2008/A1:2012
- DIN EN 61000-6-4:2019-12

Head of Technical department

Weindich Sp. J.
Mirostaw Weindich
Właściciel

Board member