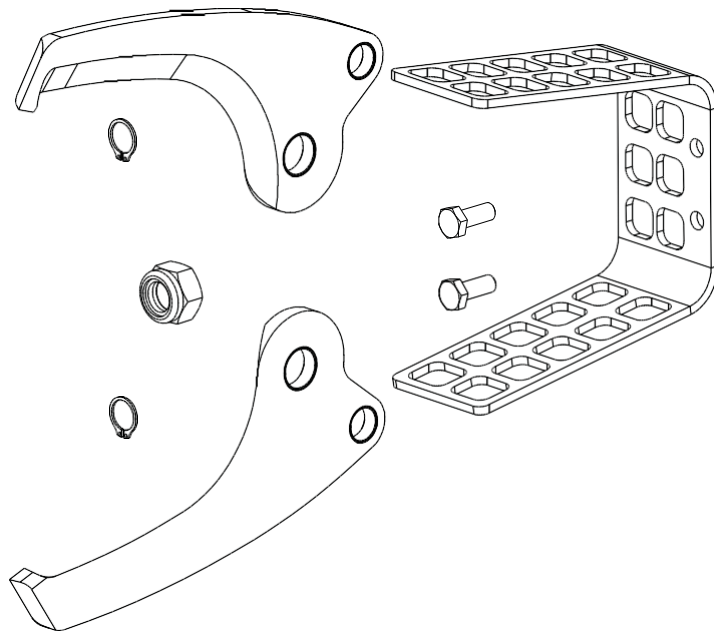


Assembly instructions

**Knife set for
EFA Z079
(008014484)**

007 014 634

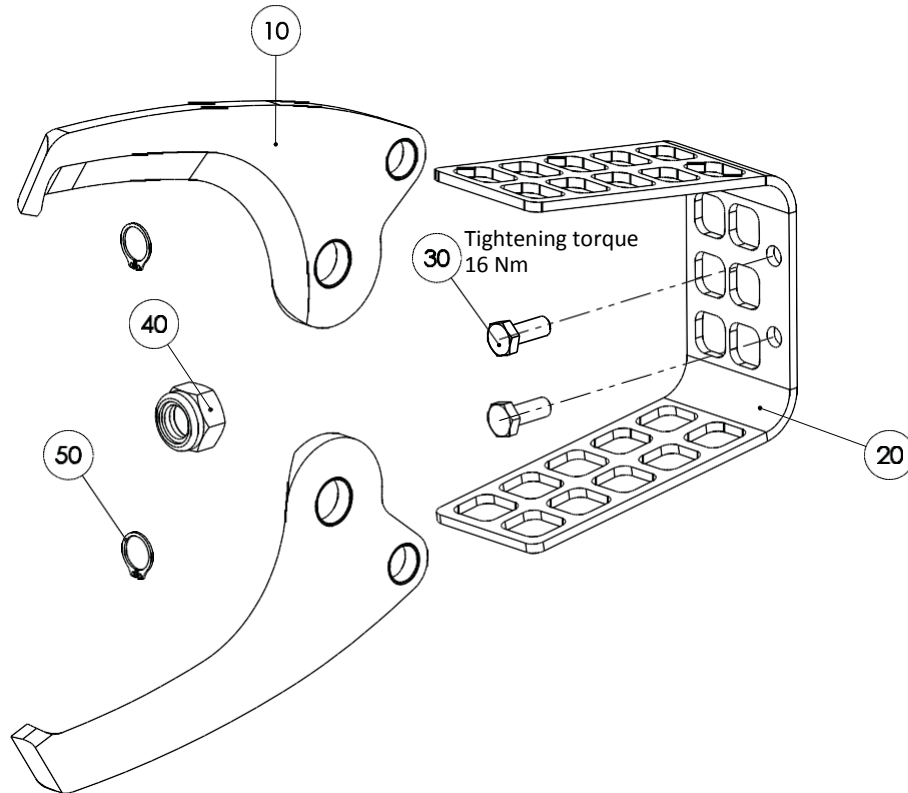


A copy of this manual must be given to all personnel working with this tool!

EFA Schmid & Wezel GmbH
Maybachstrasse 2
D – 75433 Maulbronn
Tel.: +49 7043 / 1020
Fax: +49 7043 / 10278
E-mail: efa-verkauf@efa-germany.de
Web: www.efa-germany.com



Scope of supply



No.	Part no.	Name	Quantity
10	007 014 562	Knife cpl.	2
20	003 014 563	Bracket	1
30	001 325 908	Hexagon screw	2
40	001 304 505	Hexagon nut	1
50	001 317 912	Retaining ring	2

General notes

These assembly instructions are part of the scope of supply. They must be kept ready for use within easy reach. The user must have read and understood the assembly instructions before working on the cutter!

These assembly instructions are a supplement to the original operating instructions of the hock cutter Z079.

Safety instructions

Danger symbol:



This symbol is used for situations where extreme caution is advised. Non-compliance results in an imminent danger of injury for the user or third parties! The machine can also be damaged!

Information symbol:



Sections that are marked with this symbol provide important information and useful tips concerning the correct use of the equipment.

- Knife changes as well as installation, maintenance and repair work are only allowed to be carried out on devices that have been disconnected from the hydraulic system!
- Only authorised specialist personnel are allowed to perform knife changes as well as installation, maintenance and repair work!

Intended use

The knife set is intended for mounting on the EFA Z079 hock cutter. The relatively long knives makes it easier to cut off the hocks/dewclaws/trotters at the joint.

Without the consent of Schmid & Wezel GmbH, it is not permitted for the knife set to be used other than in the stated areas of application as well as for structural changes to be carried out on the knife set or the cutter. In case of violation, any liability for consequential damage shall be excluded.

Assembly



Depressurise the cutter before any assembly work (hydraulic system)!



Cutting hazard! Wear cut-resistant safety gloves! Knives are sharpened!

1. Uncoupling the cutter

- Switch off the hydraulic unit and actuate the valve lever on the hock cutter once. The hydraulic hose is now depressurised and the hose unit can be uncoupled.
- To uncouple, loosen the safety closing ring on the coupling body. To do this, turn the closing ring until the locking mechanism is released.
- Uncoupling the hydraulic hose from the cutter.

2. Disassembly of the bracket

- Unscrew and remove screws (no. 30) and take off bracket (no. 20).

3. Disassembly of the knives

- Remove retaining rings (no. 50).
- Press out bolt (no. 60).
- Unscrew hexagon nut (no. 40) and pull out threaded bolt (no. 80).

4. Assembly of the knives



Before assembly of the knives, the dismantled parts must be cleaned, checked for wear/damage and replaced if necessary! Only use genuine EFA spare parts!



Grease all sliding points with EFA special grease!
(see Figure 2)

- Insert new knives (no. 10) and bring them into position with threaded bolt (no. 80).
- Lightly tighten hexagon nut (no. 40).
- Only tighten hexagon nut (no. 40) so firmly that the knives can still be moved **easily but without play**.
- Press in bolt (no. 60) and secure with retaining rings (no. 50).



The hexagon nut is self-locking, which means it must only be used once!
Replace retaining rings as part of each knife change!

5. Assembly of the bracket

- Screw the bracket (no. 20) onto the cutter body (no. 70) using hexagon screws (no. 30) (torque 16 Nm).

6. Connecting cutter

- Connect hydraulic hoses to the cutter.

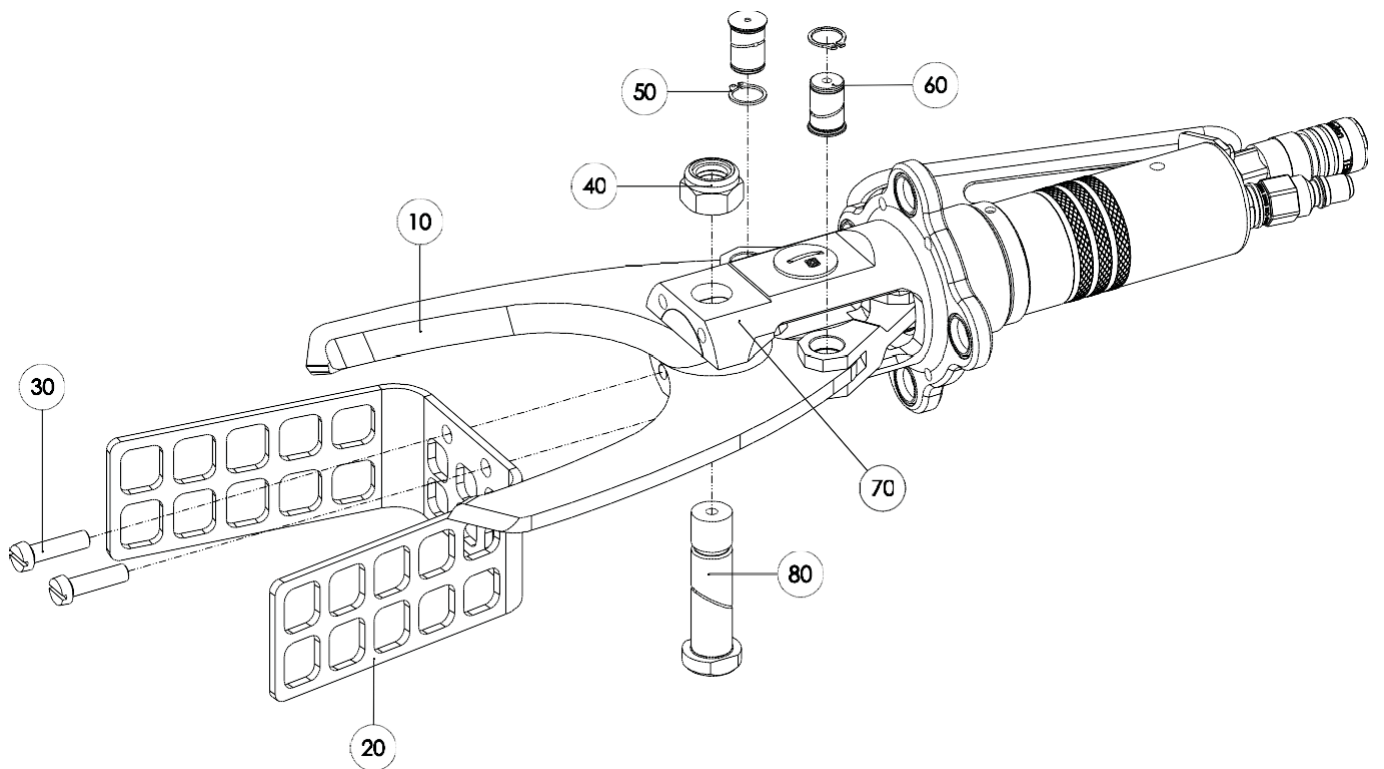


Figure 1

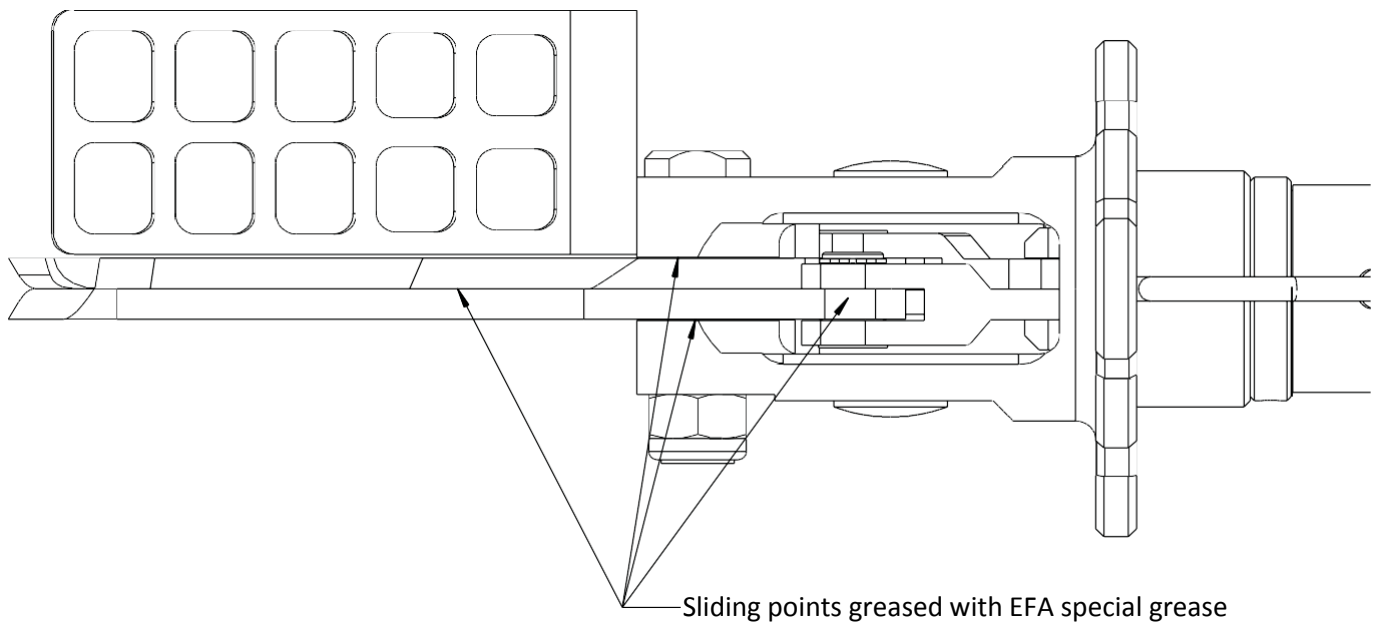


Figure 2